

PACKAGING SOLUTIONS



CAPS AND CLOSURES
FOR TUBES



Reliable partner



3
65
100
500
90
6+

production locations
customer countries worldwide
molds per year
employees
M EUR revenue
billion injected products

updated on February 2026

- 1967** Beginnings of craftsmanship in Slovenia, EU
- 1994** Multi-cavity tool production
- 2004** Global product solution provider
- 2008** Establishment of clean room facility
- 2011** President and CEO Boštjan Šifrar becomes Entrepreneur of the Year
- 2017** Celebrating our 50th anniversary (1967-2017)
- 2021** Production launched in the USA
- 2023** Production launched in Croatia, EU

SIBO group | closures plastics tools

Slovenian Global Headquarters
2 production plants

SIBO USA plastics

SIBO CRO plastics



Certificates

5

- **ISO 9001:2015**
Quality management standard
- **ISO 13485:2016**
Medical devices – Quality management systems – Requirements for regulatory purposes
- **ISO 14001:2015**
Environmental Management Systems
- **ISO 15378:2017**
Primary packaging materials for medicinal products
- **ISO 45001:2018**
Occupational health and safety

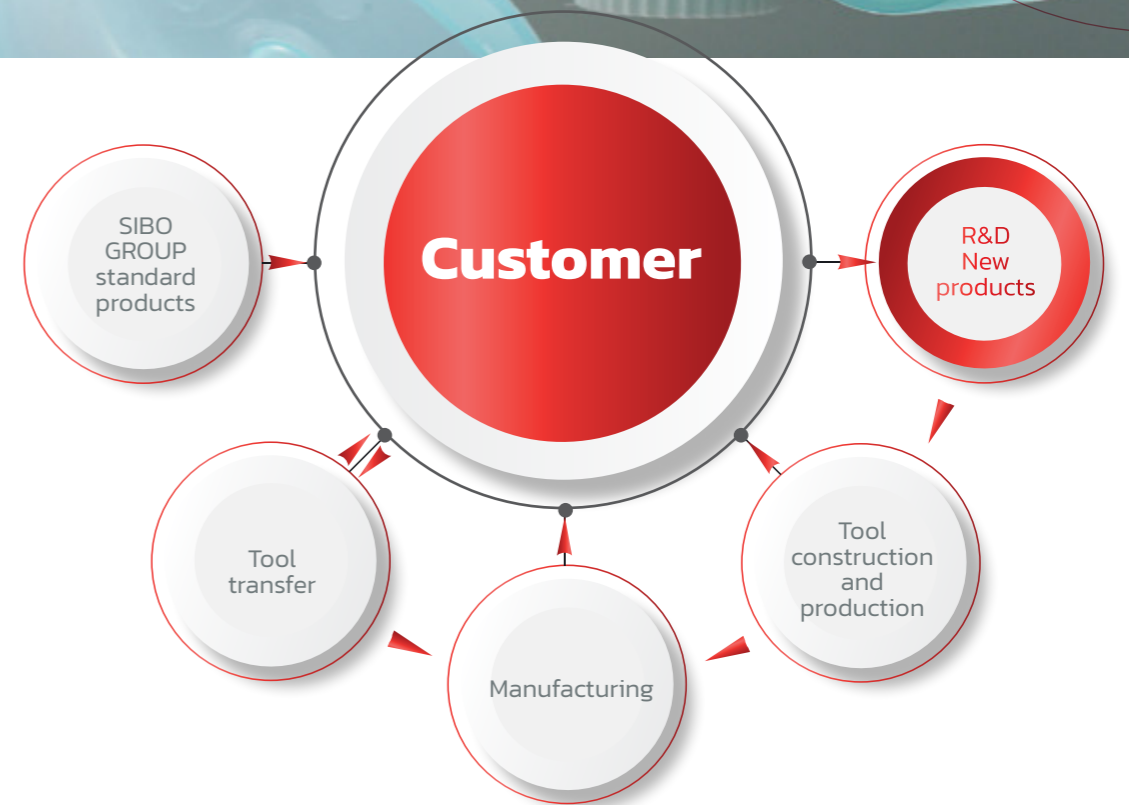
Machine park

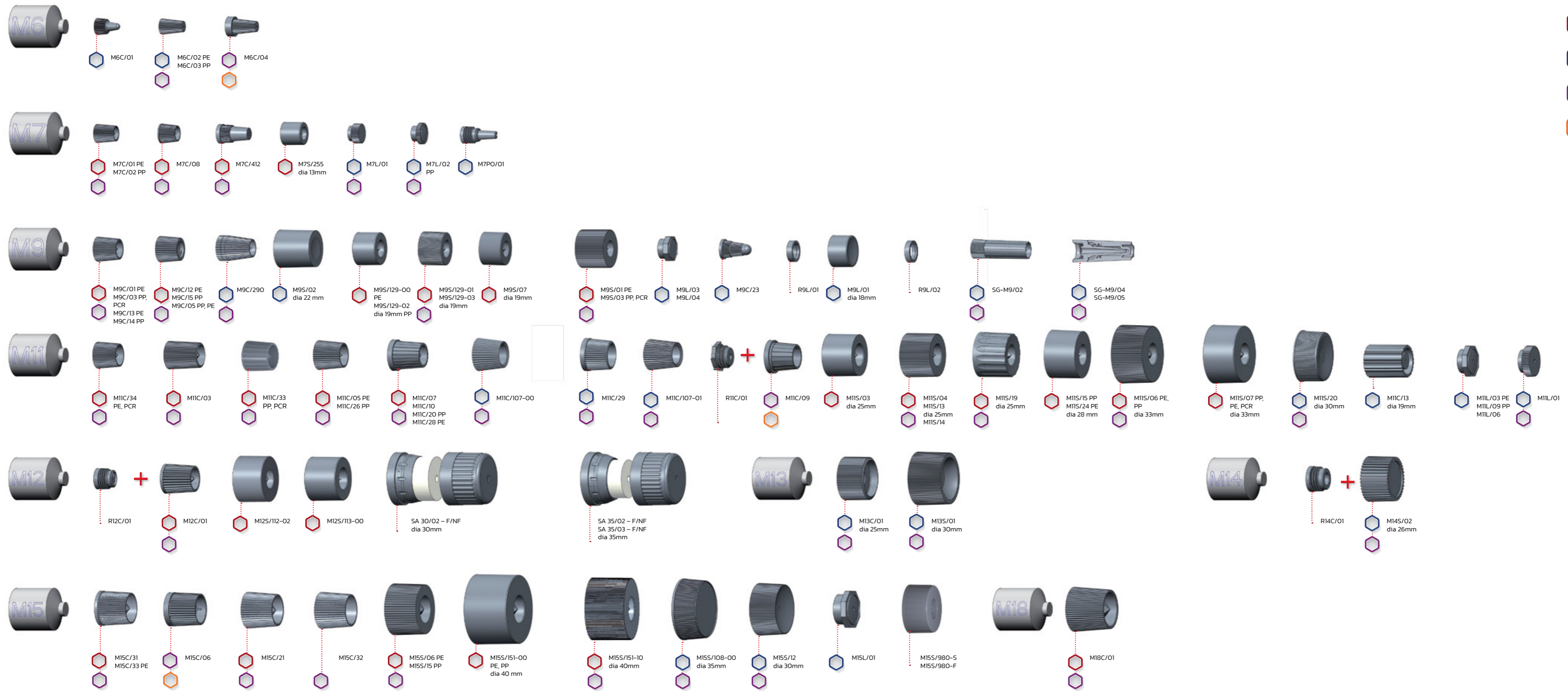
- Injection molding
- Injection blow molding
- Extrusion blow molding
- Stretch blow molding
- Clamping force 25t – 500t
- Vision system on machines
- Decoration for hot stamping
- Assembly lines







In-house research and development centre

- Quick response to customer needs, from product and mold design to in-house manufacturing.
- Possibility of 3D print prototype parts before pilot mold production.
- Possibility of different pilot molds before serial mold production.



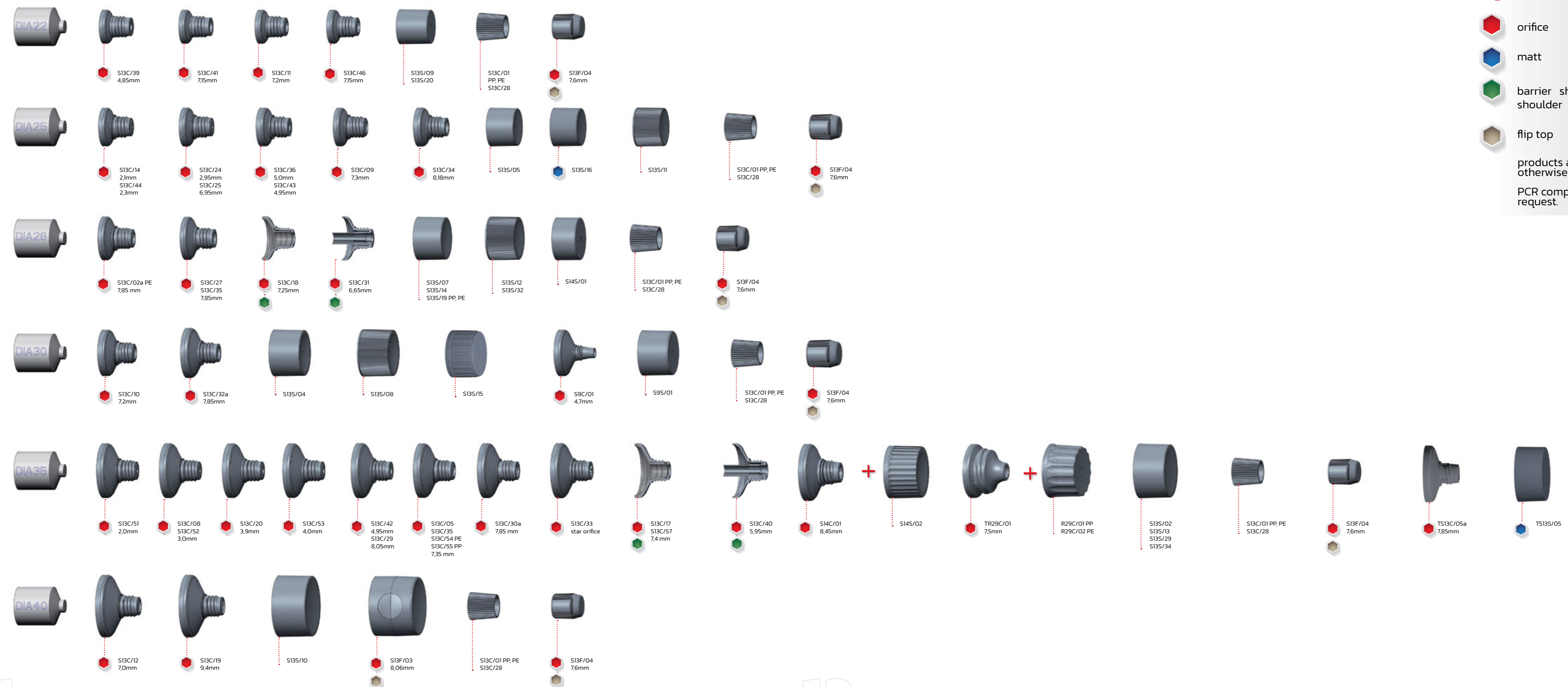


Legend:

-  with pin point
-  without pin point
-  ribbed
-  tamper evident

products are smooth if not otherwise specified

PCR components tests on request.

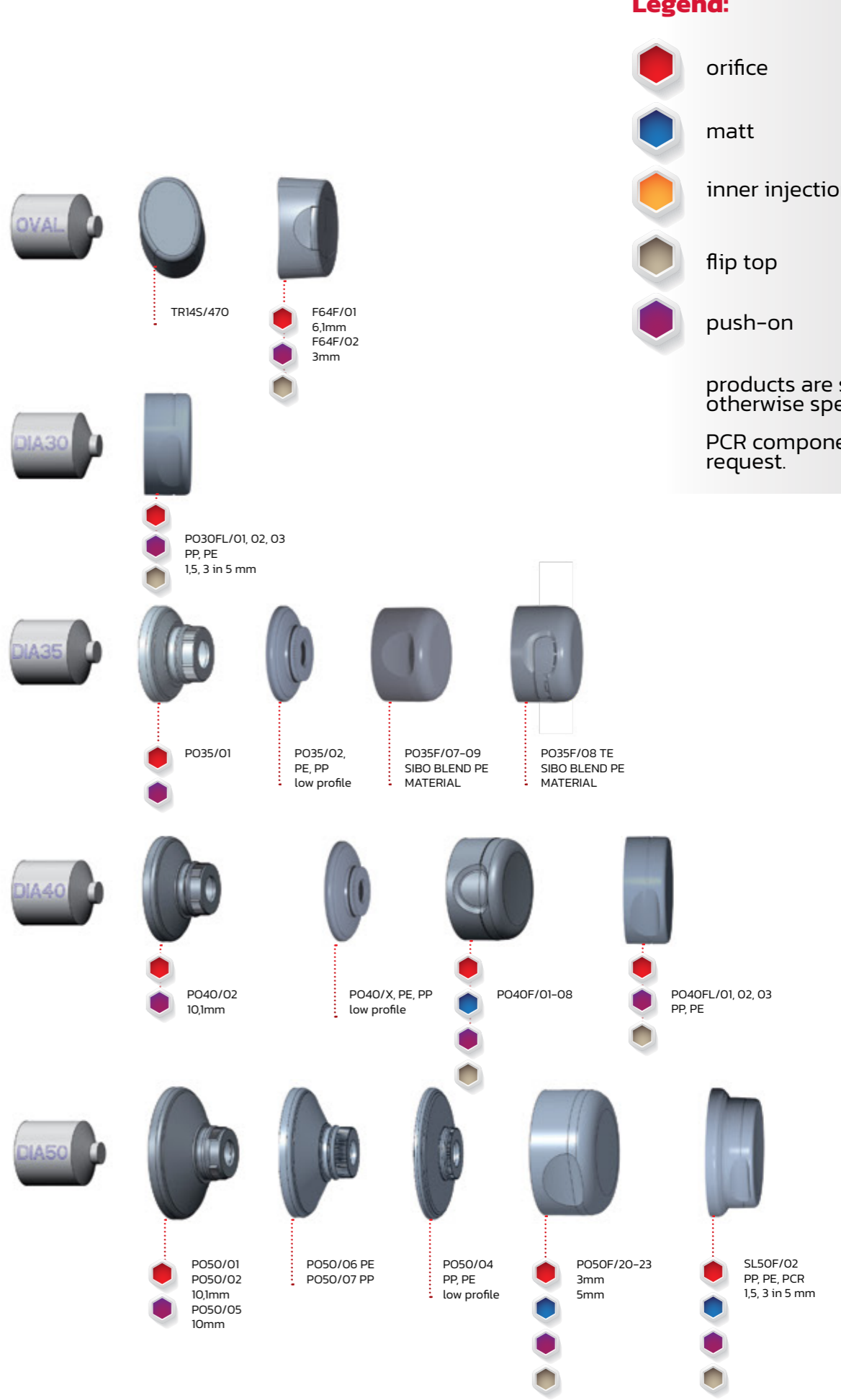
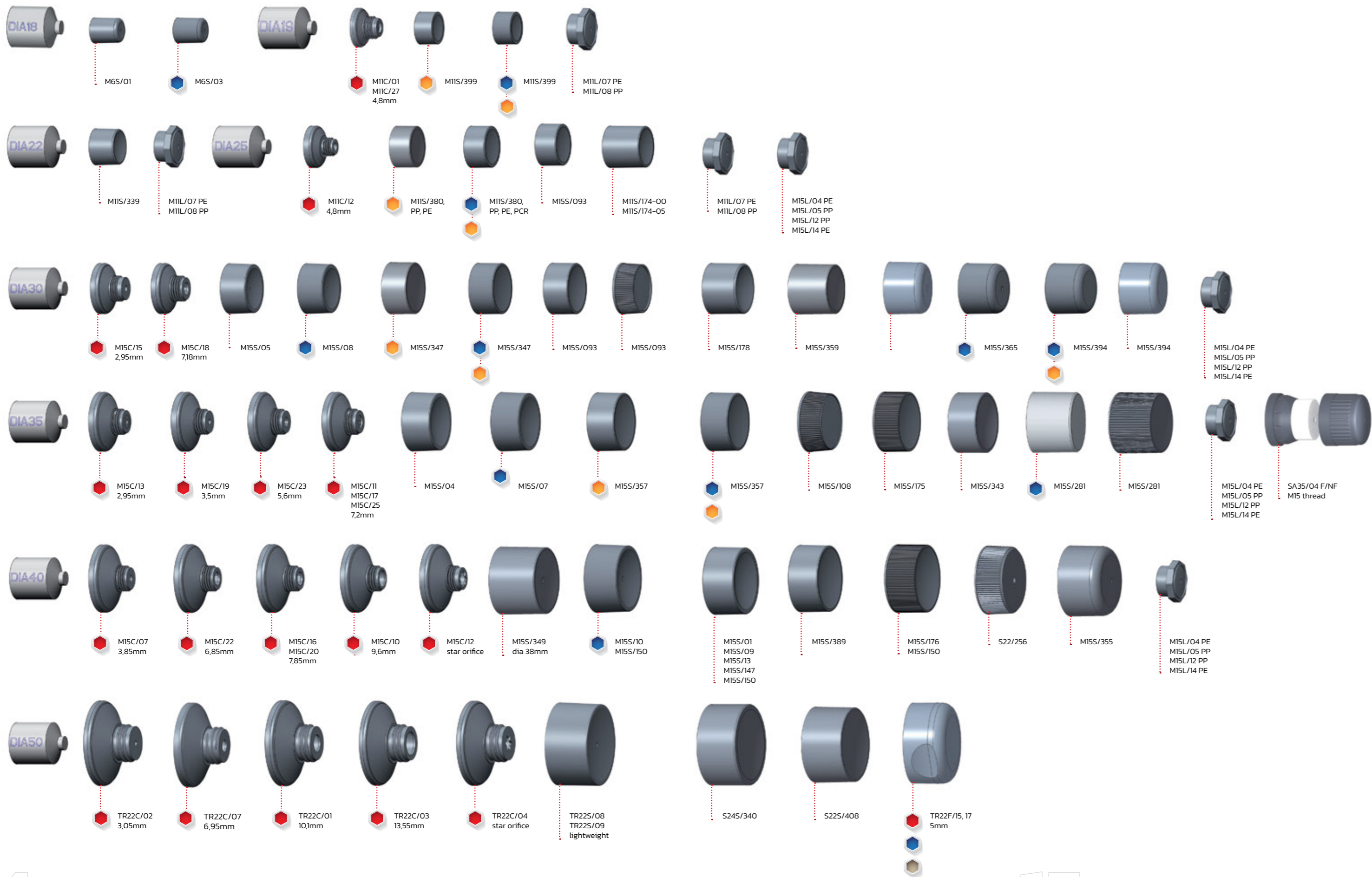


Legend:

-  orifice
-  matt
-  barrier shoulder, mixing shoulder
-  flip top

products are smooth if not otherwise specified

PCR components tests on request.



Legend:

- orifice
- matt
- inner injection
- flip top
- push-on

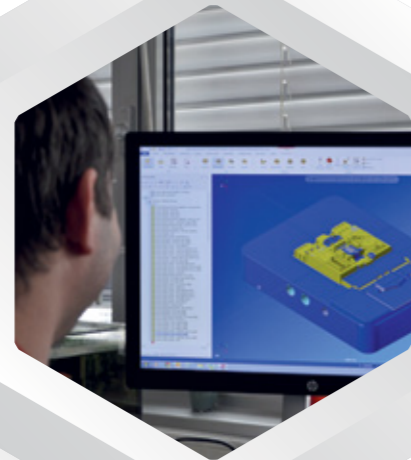
products are smooth if not otherwise specified

PCR components tests on request.

Customized products

DEVELOPMENT

60 highly qualified technical staff ensure high quality procedures and products.



MOLD TECHNOLOGY

Up to 192 cavities and 100 tools per year.



COMPETENCES

With over 50 years of experience we can be your full solution provider.

Stand out and be unique

FROM AN IDEA



Customer input-
Concept design



Feedback loops-
Customer communication

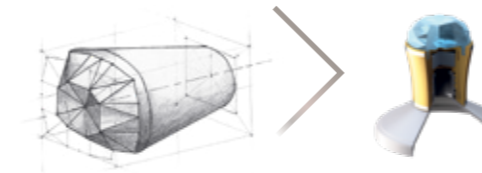


R&D -MTC-
manufacturing



Production &
assembly
Packaging &
shipping

TO FULL SOLUTION



EXTERIOR DESIGN

ADDING THE FINISHING TOUCHES

FUNCTIONAL DESIGN

diamond pp
metallic 3.1 g

chrome ring
metalization

external cap
pp gold 3.6 g

weight steel
5.5 g

internal cap pp
gold 1.2 g

chrome ring
metalization

shoulder pe-hd,
2.8 g

Innovations

AISA ULTRALIGHT

- Weight only 0,6 grams
- 10 times lighter from standard flip top
- HDPE and PCR material
- Ultralight™ cap fits all tube diameters
- Minimal investment on extrude line



LIGHTWEIGHT SIBO FAST CLICK Full lightweight solution for DIA 35

- Stand-up design
- Without threads - click function
- Standard outer design
- Designed to be available as mono-material solution
- Combined weight of only 3,5 g

LIGHTWEIGHT SHOULDERLESS FLIP TOP

For global cosmetic brand owners

- Dia 50 shoulderless fliptop solutions
- Available in PP and PE material
- Total weight: 5,5 g
- Target weight: 4,5 g

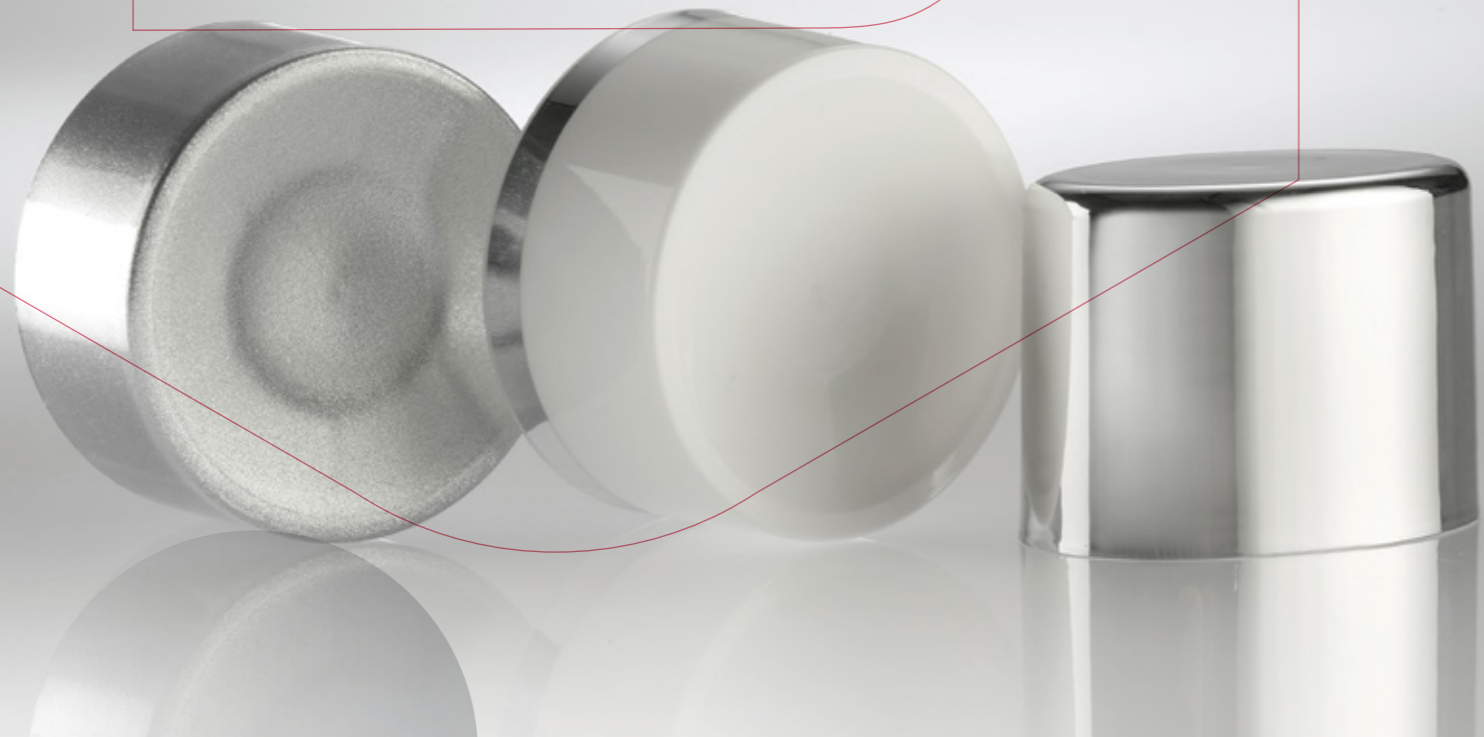
Possibility to have assemblies in PCR material or with hot stamp decoration. Inhouse development of PE Blend material for commercial use in Flip Top closures.



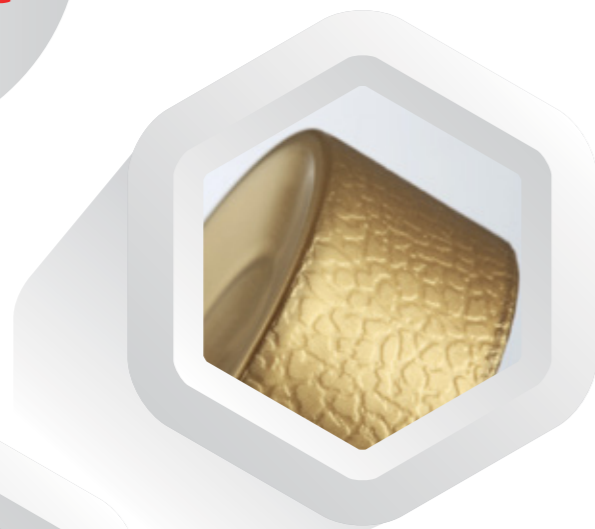
U-LITE STAND-UP CAP Full Lightweight solution for DIA 35

- Stand-up ERGONOMIC design
- Quarter turn or standard thread
- Lock function
- Designed to be available as mono-material solution
- Combined weight of only 1,6 g

Combined plastic saving's of 69%



Reliable partner



- different colors
- variation of surface textures
- hot stamping
- UV metalization
- tampon print.

Choose unique decoration – variety of techniques: different colors, surface textures, metalization or hot foil stamping.

Ensuring high quality standards



INTEGRATED MANAGEMENT SYSTEM -

compliance between organizational regulations and international standards

AND FOLLOWING:

Good manufacturing practice GMP

Dedicated measurement laboratory for high precision quality with our 2D and 3D measuring instruments from Zeiss, Tagarno, Contura, Keyence.

fast reply
You receive our answer within 2 working days.

minimum order
No minimum order quantity (1 box).



receiving order
Immediately assigned to a specific person in our team.

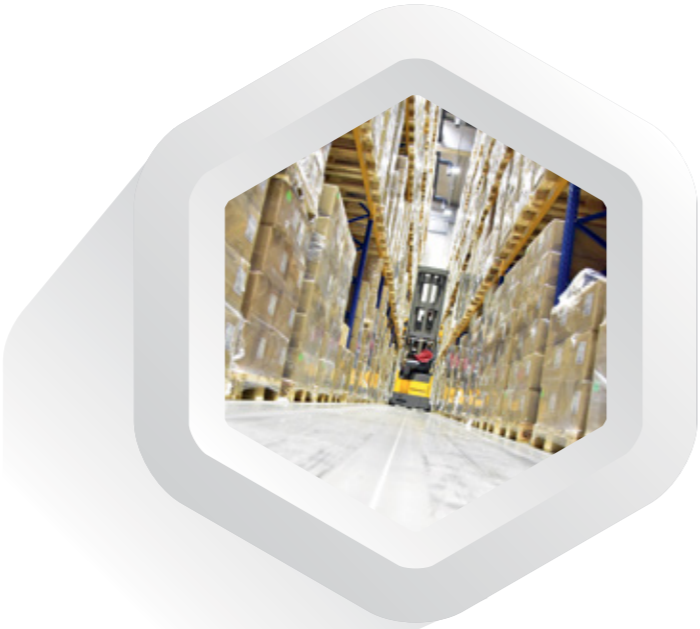
after-sales service
Prompt inspection and reply within 3 working days.

multilingual sales team
Service in English, German, Slovenian, Serbian, Croatian, Spanish, Italian and Russian.

Customer Service

WAREHOUSE

semi automatic with 4.100 pallet spaces
 300 regal pallet spaces for materials
 Locations: Slovenia, USA, Croatia, Russia



LOGISTICS

Organization of transport
 Supply chain system-Kanban
 Call-off and annual orders

MATERIALS

10 outdoor silos
 Central dosing system
 PP, PE, HD-PE, PS, PC, POM, PCR,
 ISCC PLUS



Sustainability



Energy

Sibo Group's energy consumption



Commitment to use of **renewable energy sources**

2025 at least **50%**

2030 **100%**

Climate

Carbon Intensity Index



Massive reduction of CO₂

2020 **8,730** t CO₂ eq

2023 **95** t CO₂ eq

Producing caps and shoulders from **one material**

Using **post-industrial** and **post-consumer** recycle material



Developing **low weight** products to enable material savings

Using **bio-based** material



Open a better future



+386 4 502 12 00
info@sibogroup.com
www.sibogroup.com